

# CentraSep<sup>®</sup> DX-1040

Clean fluids work better and last longer



## DESIGN AND OPERATING FEATURES

Self-cleaning

Excellent media-free filtration

Wear protection liner and inserts

Product feed pump and pre-filter, designed to be fed from headers pressure or its own pump

Light and heavy phase centripetal pumps

Back pressure valve on heavy phase and light phase discharge pipe for fine tuning of separation

NEMA 12-control panel w/Allen Bradley PLC and Touchscreen

Integral sludge/tramp oil tank with waste pump

Set of regulating rings

Mounting isolators

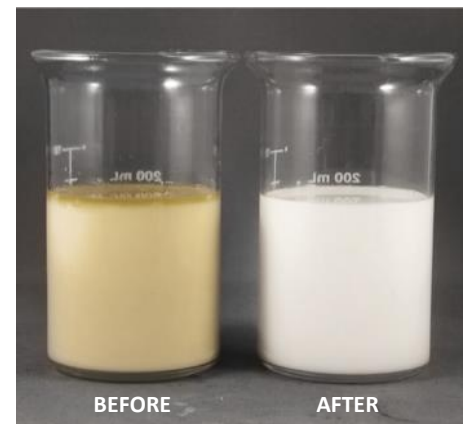
Set of tools

## Get Results With Your Industrial Fluids

The DX-1040 is designed to efficiently remove solids, insoluble contaminants, and tramp oil from water-based fluids, as well as water and solids from straight oils. The unit produces a very high peripheral centrifugal force for the removal of fine particles (0.1 to 50 microns) and the efficient separation of two immiscible liquids (e.g. tramp oil from water-based metalworking fluids). Modules are custom designed for your particular fluid issues. The removal of contaminants greatly improves fluid performance and longevity. For straight oils, this means removal of solids and free water. For coolants, efficient removal of fines, tramp oil, and bacteria has a tremendous positive impact, such as longer life, reduced chemical purchases and disposal costs, reduced biocide usage, better finish and size control, and better tool life. It is all available without capital investment or long-term commitment.

## Select the Program That is Right for You

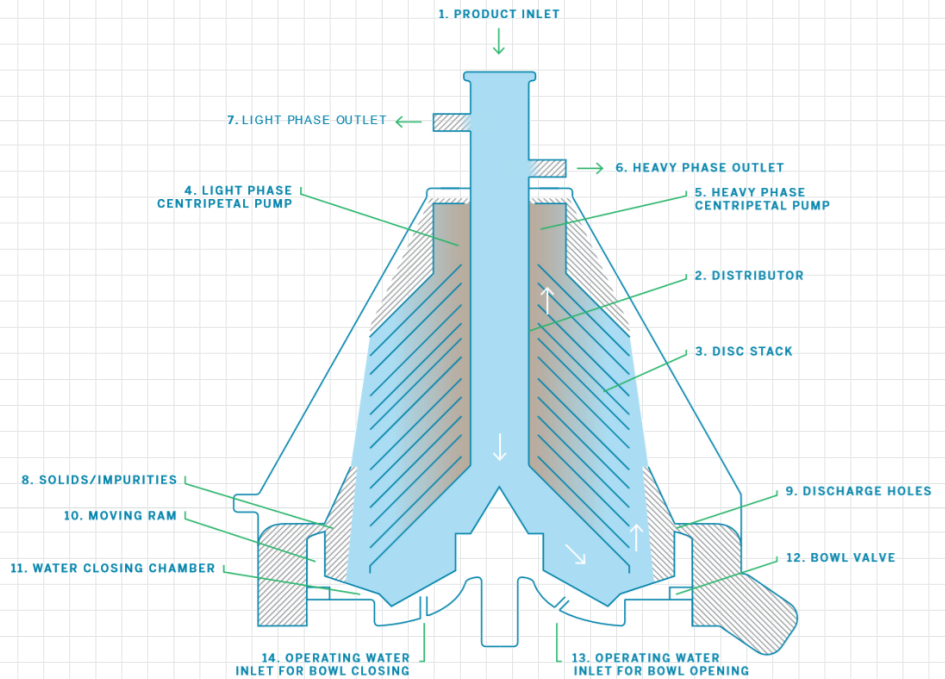
High-speed centrifugation is available for purchase, or rental with the Purification Service agreement. With the nation's largest privately-owned fleet of purification modules, a large service staff and hundreds of years of combined experience in separation technologies, Trucent has unparalleled capabilities and response time. And, with the Purification Service, you will experience all the benefits of clean industrial fluids without capital expenditure, without long-term commitments and without any service obligations. Trucent takes care of the machine for you, including all parts and all labor and with our rapid response promise, free upgrades and even machine replacement if necessary. You reap the benefits, we'll take care of the rest.



Note the difference in both color of product and removal of oil layer

# CentraSep<sup>®</sup> DX-1040

## Dimensions and Specifications



## Working Principle

### CENTRASEP DX-1040 PURIFICATION MODULE

This module separates the water phase, oil phase and solids (i.e., 3-phase separation). The separation takes place in the bowl of the separator, which rotates at a speed of 8,050 rpm. As the diagram below shows, the product flows into the bowl through a feed pipe (1) and into the distributor (2) undergoing acceleration until it reaches the bowl rotating speed. The distributor (2) conveys the product to the disc stack (3) where the separation takes place. Discs divide the internal space of the bowl into many thin layers, dramatically increasing the unit's separation efficiency. In water-based coolant applications, the light phase, or tramp oil, flows toward the center of the bowl and leaves the disc assembly via its inner edge. The clean coolant, or heavy phase, flows toward the bowl periphery. The two liquid phases exit the bowl from separate points. Here, two centrifugal pumps (4,5) convey each phase separately under pressure to its respective outlet port. Simultaneously, the solid impurities (9) collect on the under side of the discs. They are continually forced to the periphery of the bowl (8) where they are periodically discharged automatically through the discharge holes.

### DIMENSIONS AND WEIGHTS

Length	70	in
Width	52	in
Height	72	in
Gross Weight	3,100	lbs

### TECHNICAL DATA

Hydraulic Capacity	2,113	gph
Solids Chamber Capacity	1.3	gal
Bowl Speed	8,000	rpm
Motor	15	hp
Centrifugal Force	12,300	g-forces
Utility Requirements	480	volts
	3	phase
	60	hertz
	60	amps
Connection Sizes	40-50	psi waterline
	2"	feed
	1"	waste
	1.25"	clean return
	5/8"	supplied water hose