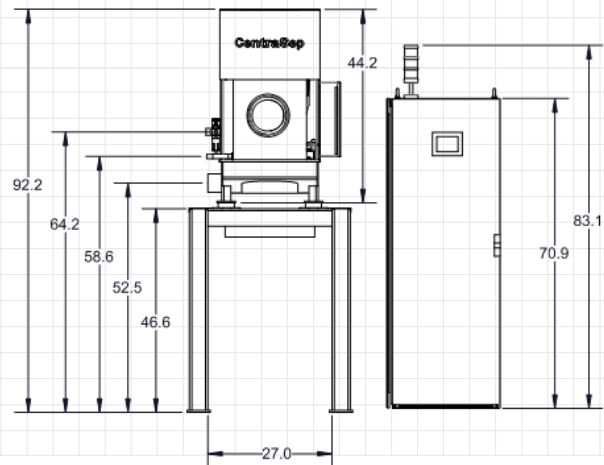
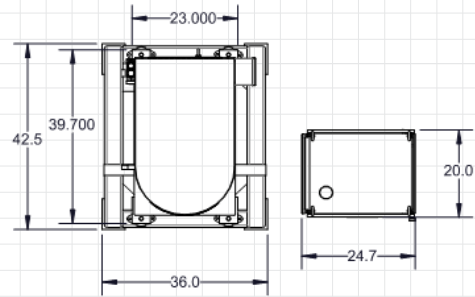


# CentraSep<sup>®</sup> S-123

## Dimensions and Specifications



|                      |  |
|----------------------|--|
| <b>STAND</b>         | Carbon Steel, 4" tube                    |
| <b>HOUSING</b>       | 316 Stainless Steel;<br>All wetted parts |
| <b>ROTOR</b>         | 316 Stainless Steel                      |
| <b>SCRAPER BLADE</b> | 316 Stainless Steel<br>3-Blade           |

|                             |   |
|-----------------------------|---|
| <b>STAND</b>                | 42"L, 36"W, 46.6H"                        |
| <b>CENTRASEP</b>            | 40"L, 23"W, 44"H<br>Powder Coated         |
| <b>CLEAN DISCHARGE PORT</b> | 4" Tube, 52" to Centerline<br>from Floor  |
| <b>DIRTY FEED PORT</b>      | 3/4" NPT, 56" to<br>Centerline from Floor |

|                                |                                      |
|--------------------------------|--------------------------------------|
| <b>MODEL NUMBER</b>            | CentraSep <sup>®</sup> S-123         |
| <b>ROTOR SPEED</b>             | Variable to 3,600 RPM                |
| <b>GRAVITY FORCE</b>           | Variable to 2012 G's                 |
| <b>SOLIDS HOLDING CAPACITY</b> | 3 Gallons                            |
| <b>ELECTRICAL MOTOR</b>        | 7.5HP, TEFC, Hostile Duty            |
| <b>ELECTRICAL SERVICE</b>      | 480 Volt, 3 Phase, 40 Ampere         |
| <b>CONTROL PANEL</b>           | NEMA 12                              |
| <b>PLC</b>                     | Allen-Bradley                        |
| <b>AC DRIVE</b>                | ABB ACS 880 Direct Torque<br>Control |
| <b>AIR REQUIREMENTS</b>        | 3 SCFM, 60 PSI Shop Air              |
| <b>NOISE LEVEL</b>             | < 85 dB                              |