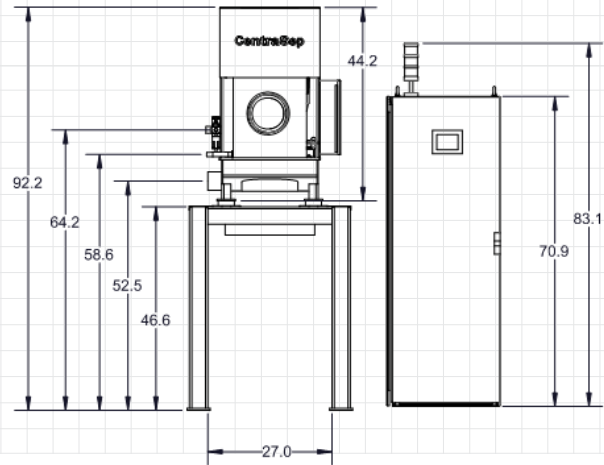
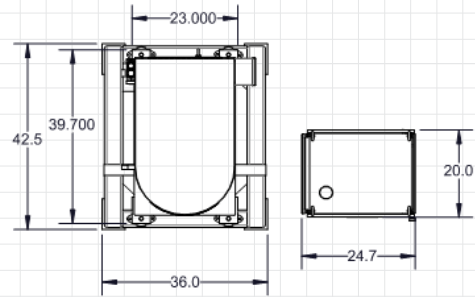
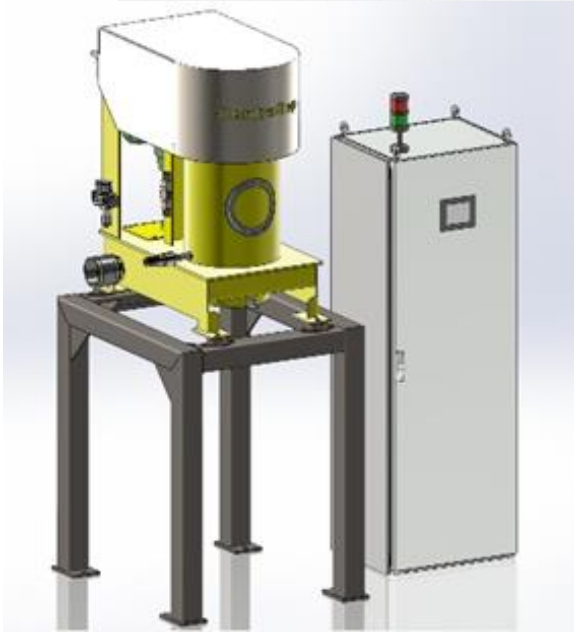


CentraSep[®] S-123

Dimensions and Specifications



STAND	Carbon Steel, 4" tube
HOUSING	316 Stainless Steel; All wetted parts
ROTOR	316 Stainless Steel
SCRAPER BLADE	316 Stainless Steel 3-Blade

STAND	42"L, 36"W, 46.6H"
CENTRASEP	40"L, 23"W, 44"H Powder Coated
CLEAN DISCHARGE PORT	4" Tube, 52" to Centrline from Floor
DIRTY FEED PORT	3/4" NPT, 56" to Centerline from Floor

MODEL NUMBER	CentraSep [®] S-123
ROTOR SPEED	Variable to 3,600 RPM
GRAVITY FORCE	Variable to 2012 G's
SOLIDS HOLDING CAPACITY	3 Gallons
ELECTRICAL MOTOR	7.5HP, TEFC, Hostile Duty
ELECTRICAL SERVICE	480 Volt, 3 Phase, 40 Ampere
CONTROL PANEL	NEMA 12
PLC	Allen-Bradley
AC DRIVE	ABB ACS 880 Direct Torque Control
AIR REQUIREMENTS	3 SCFM, 60 PSI Shop Air
NOISE LEVEL	< 85 dB